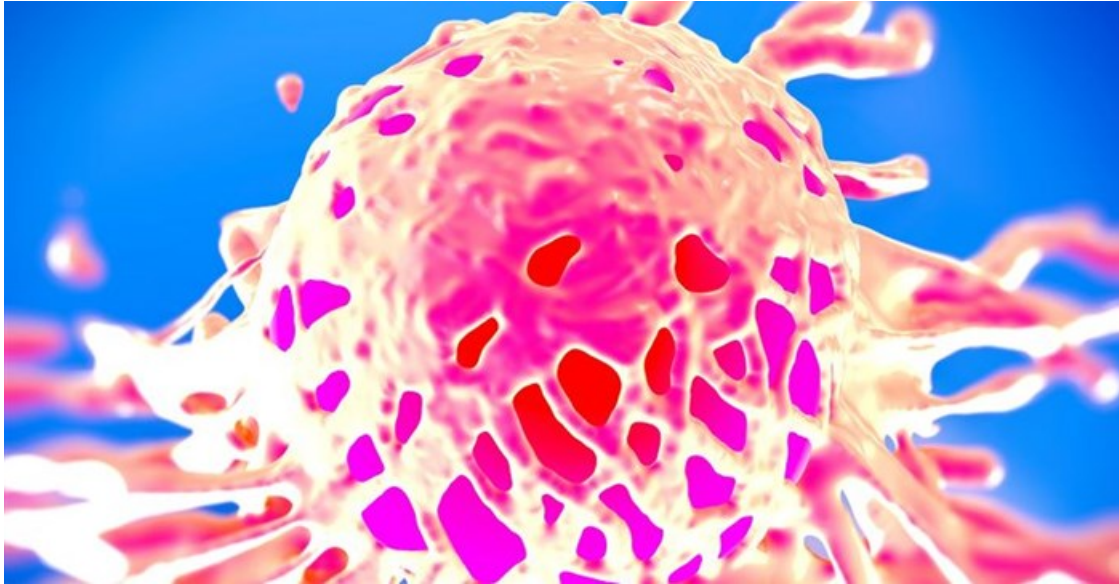


# Upper limb function in breast cancer survivors

The African Cancer Institute (ACI) at the Faculty of Medicine and Health Sciences (FMHS), Stellenbosch University (SU), has formed a partnership with the Cancer Association of South Africa (CANSA) to focus on cancer research regarding public health, primary care, nursing, and rehabilitation sciences to build capacity for basic and advanced cancer care.



© royaltystockphoto [123RF.com](https://www.123RF.com)

The partnership was launched recently at a cancer research symposium at the FMHS with key experts addressing various aspects linked to vaccination against cervical cancer, rehabilitation of breast cancer survivors, smoking and cancer, nutrition in cancer management, funding opportunities for research and current research activities related to cancer.

In the first in a series of [podcasts](#), Dr Delva Shamley, interim director at the Centre of Clinical Research at UCT, discusses upper limb rehabilitation in breast cancer survivors.

For more, visit: <https://www.bizcommunity.com>